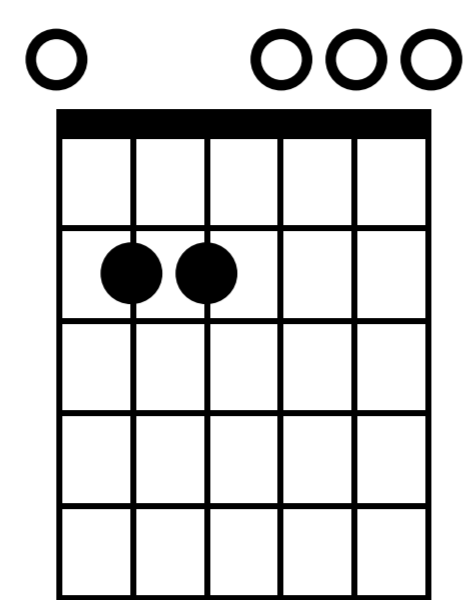


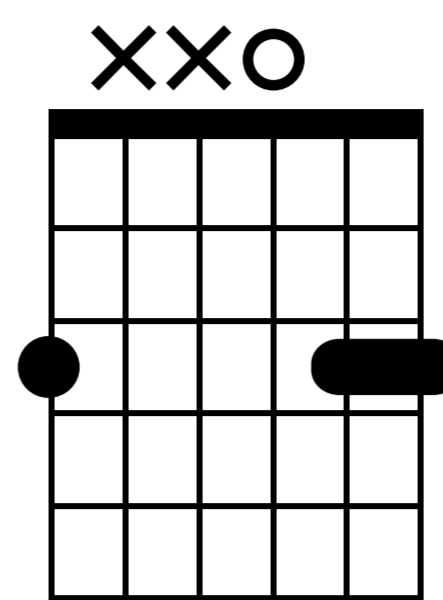
God Rest Ye Merry Gentlemen

n.guit.

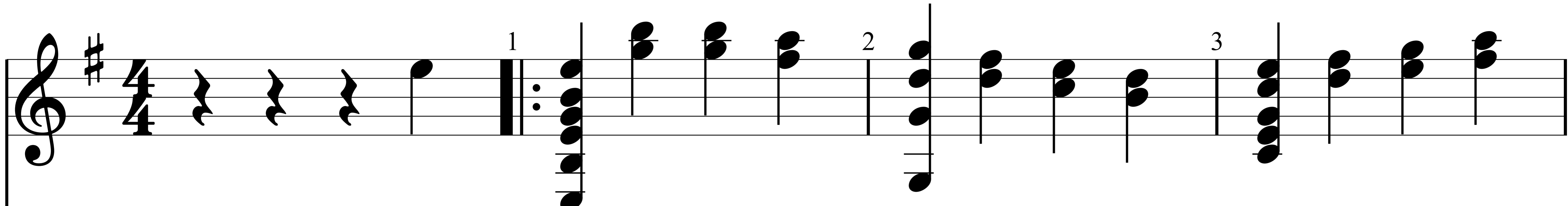
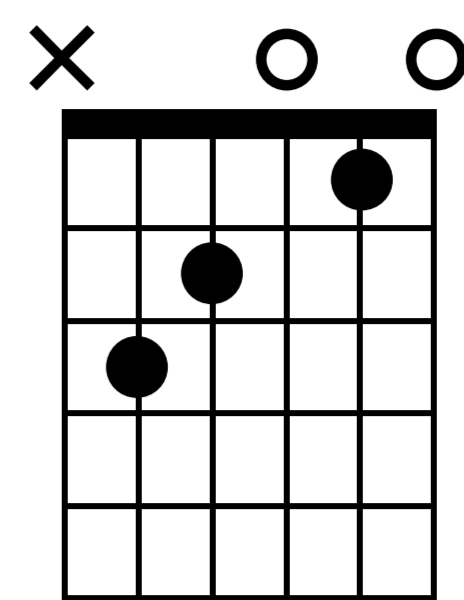
Em



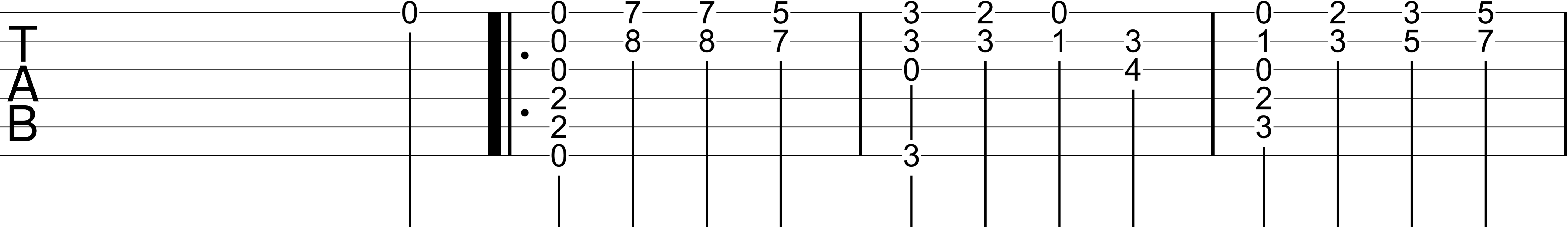
G5



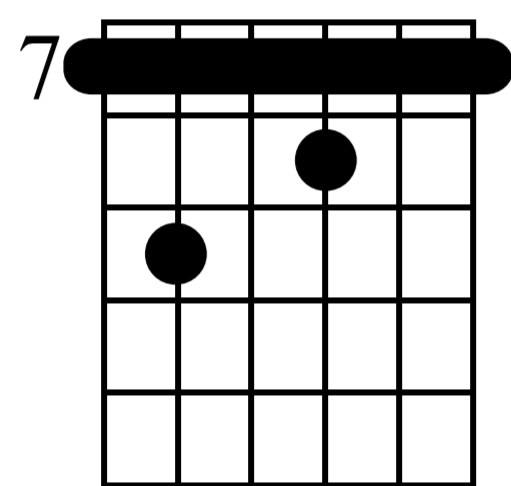
C



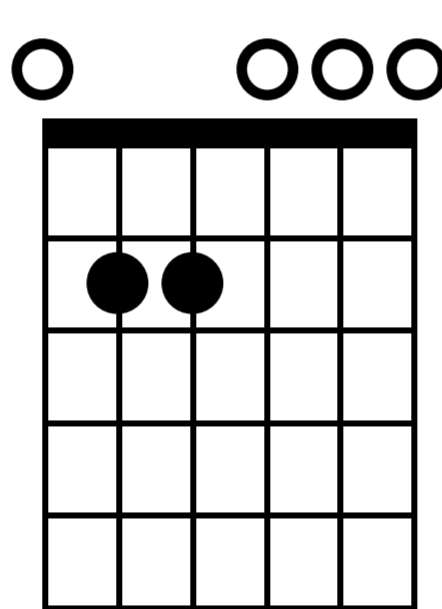
God rest ye merry gen- tle- men. Let not- hing you dis-



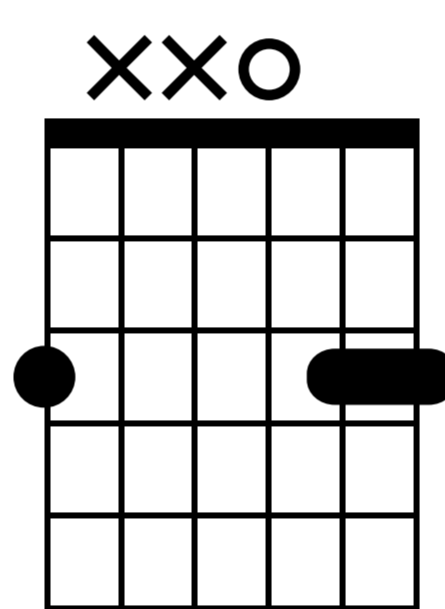
B7



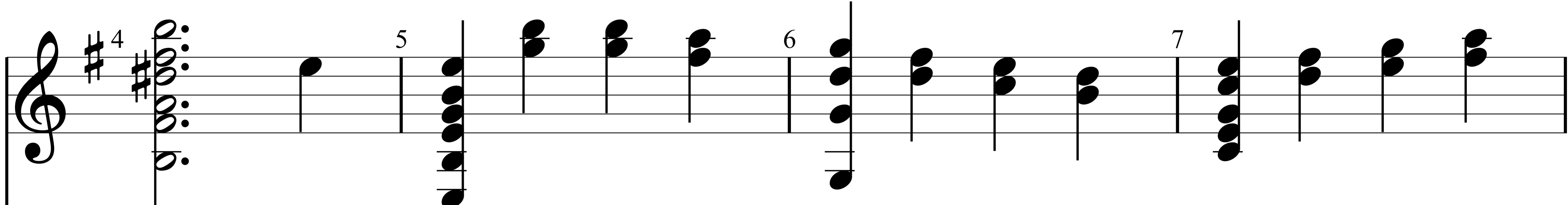
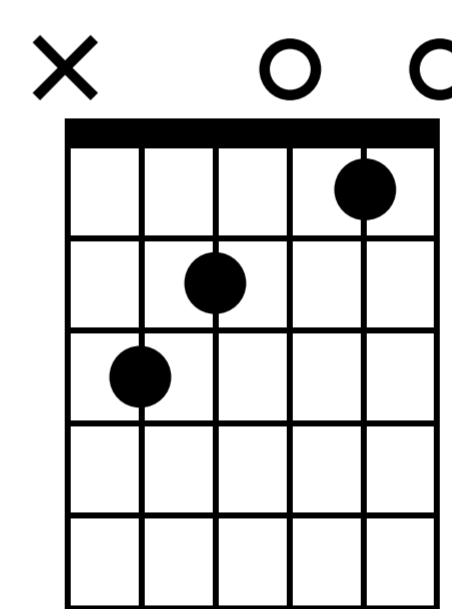
Em



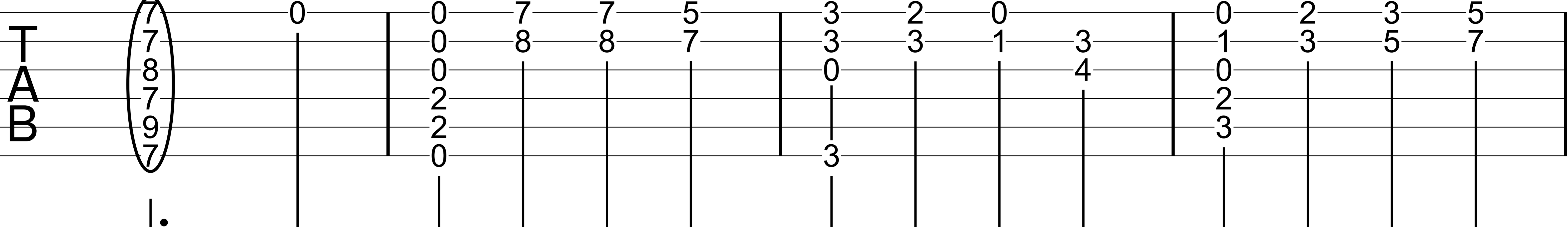
G5



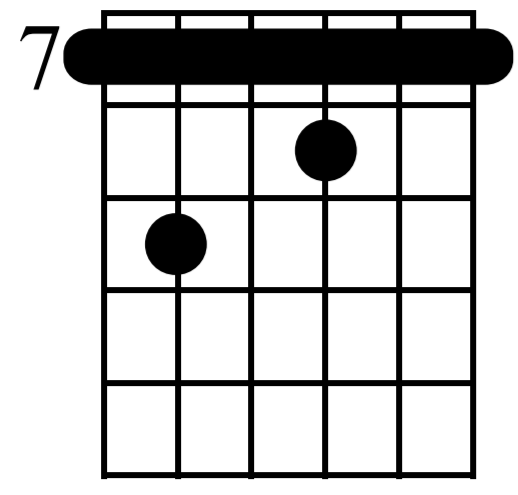
C



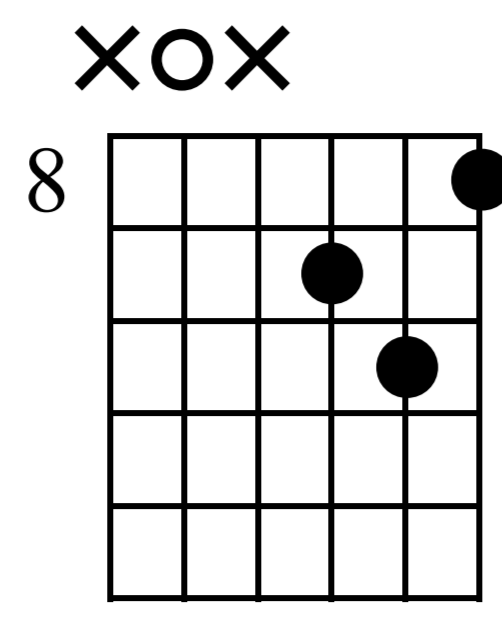
may. Re- mem- ber Christ our Sa- vior was born on Christ- mas



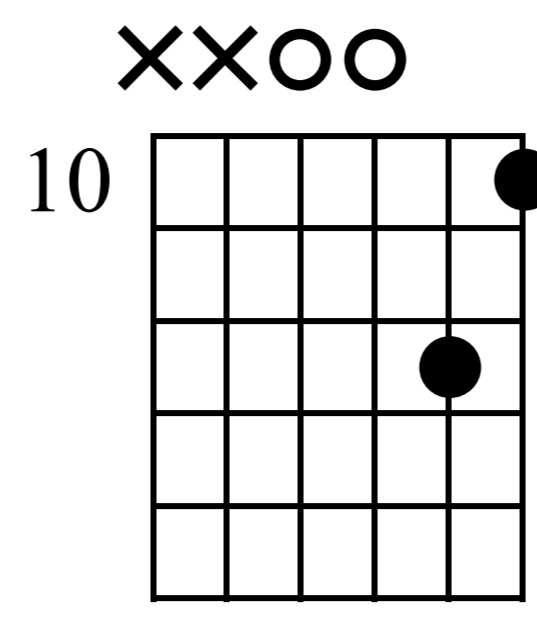
B7



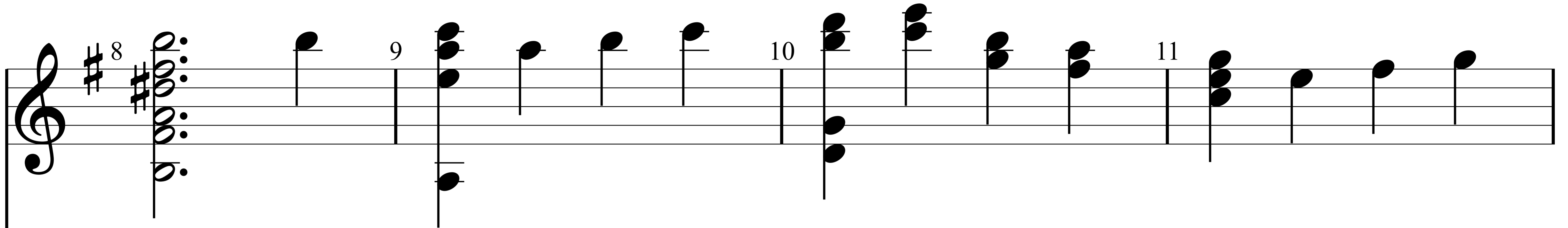
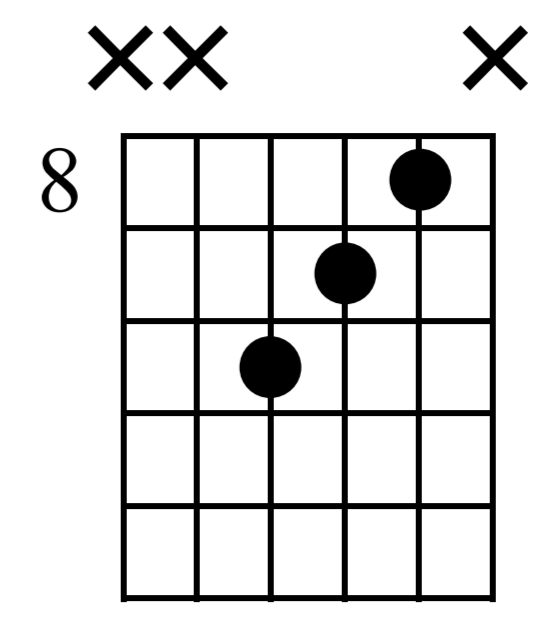
Am



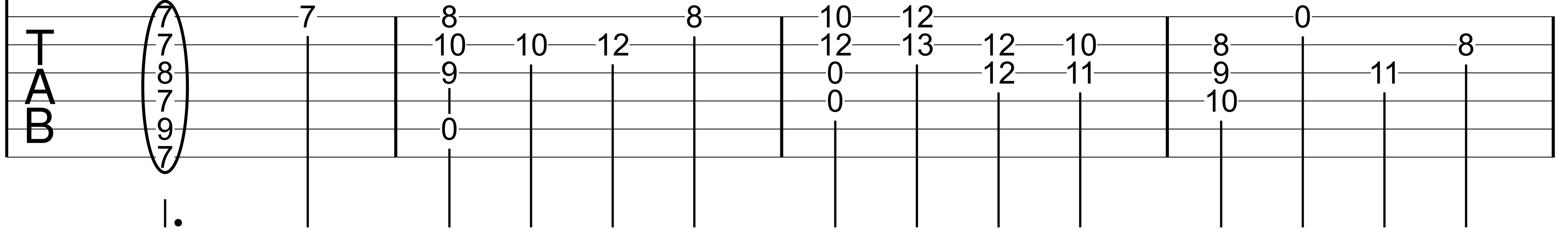
G



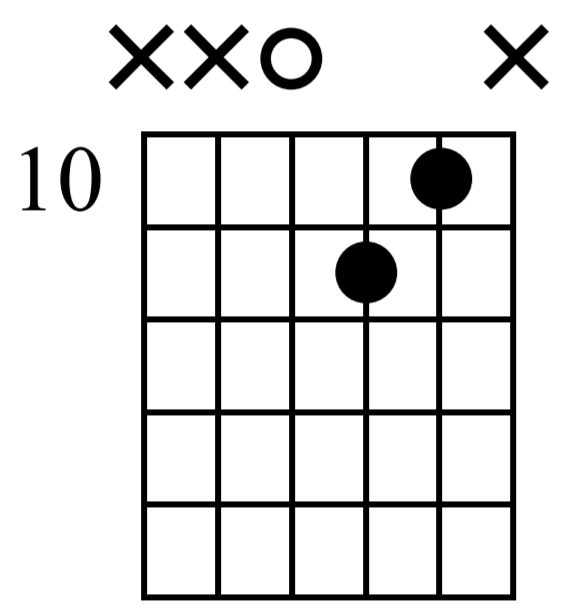
C



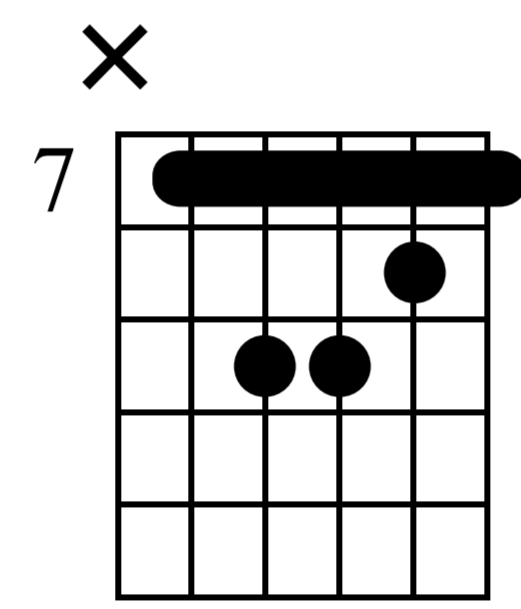
Day. To save us all from Sa- tan's pow'r when we were gone a-



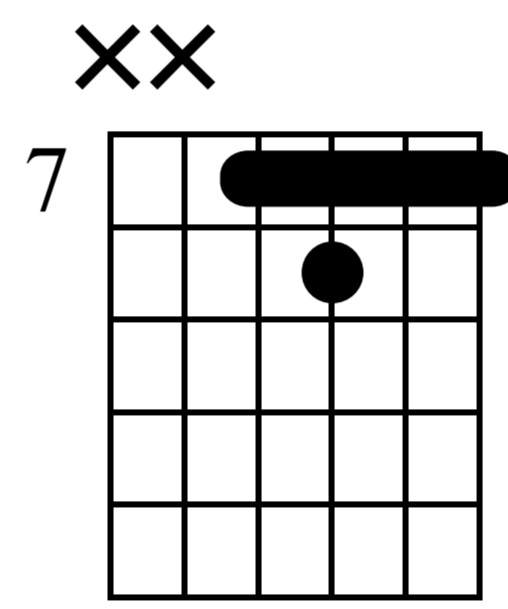
D



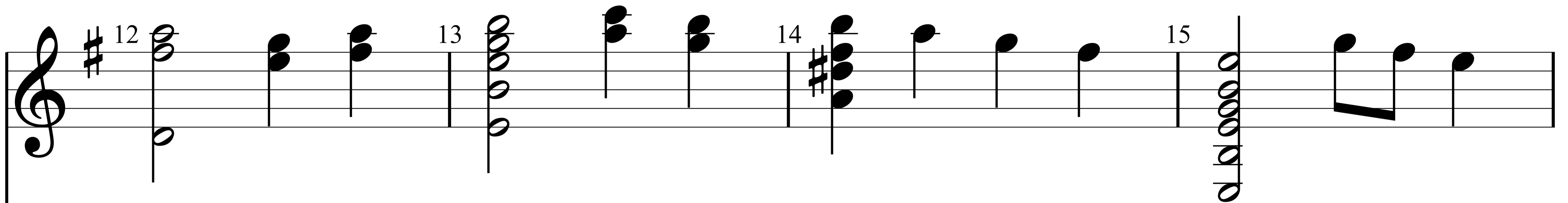
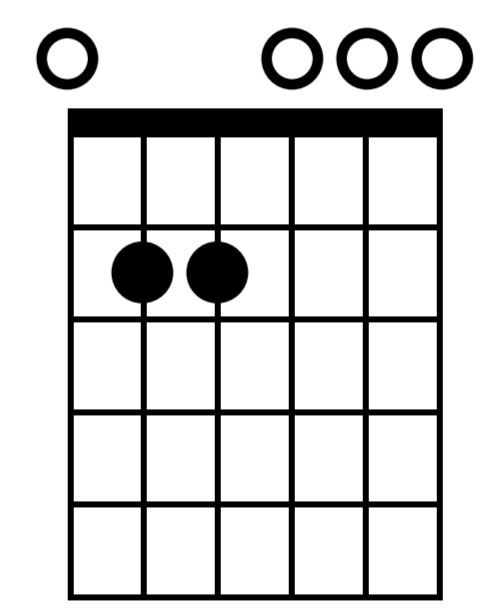
Em



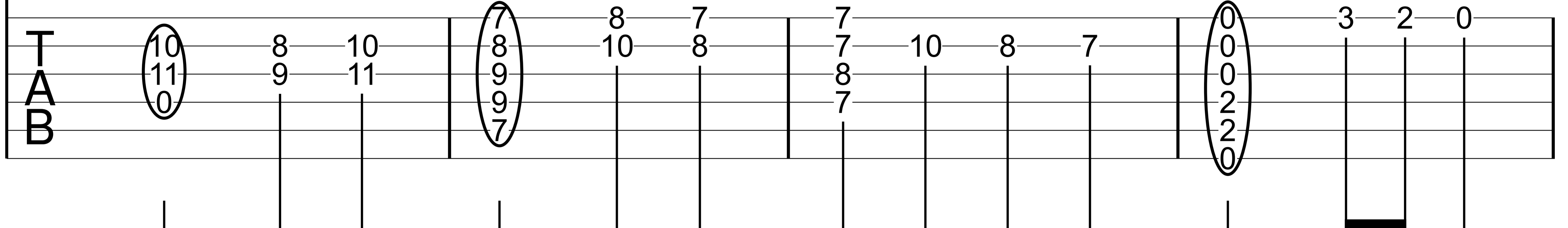
B7



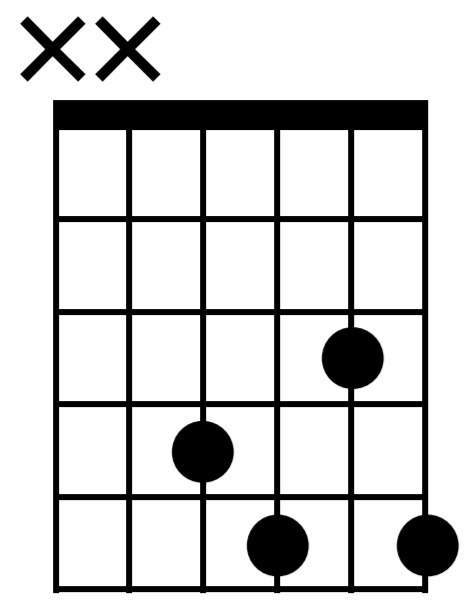
Em



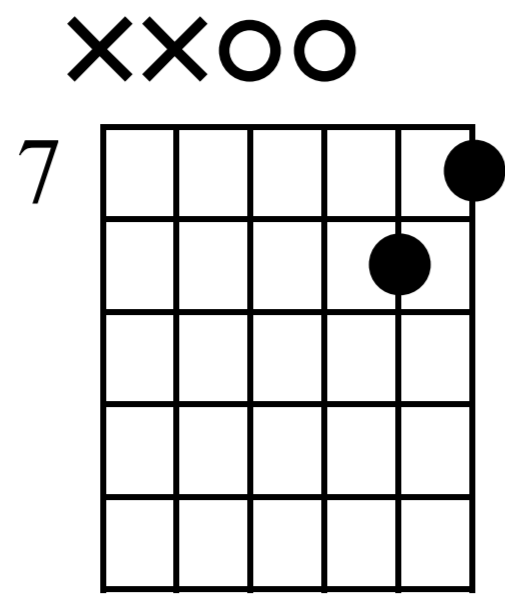
stray. Oh tid- ings of com- fort and joy, com- fort and



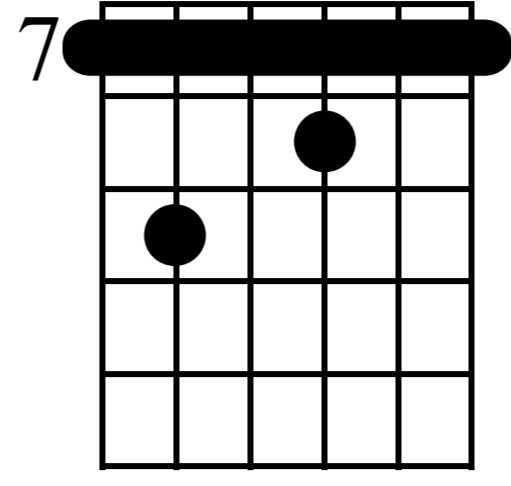
D7



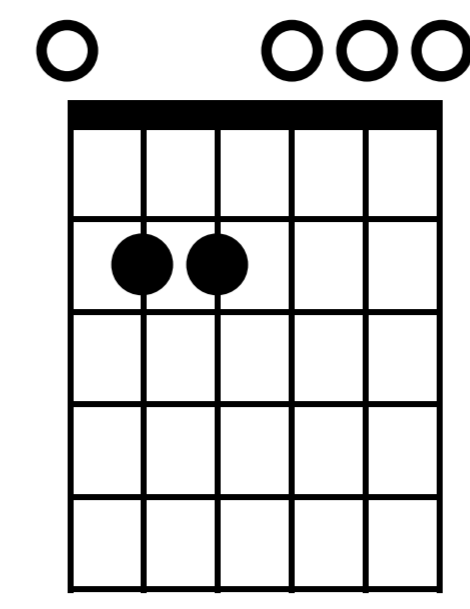
G/D



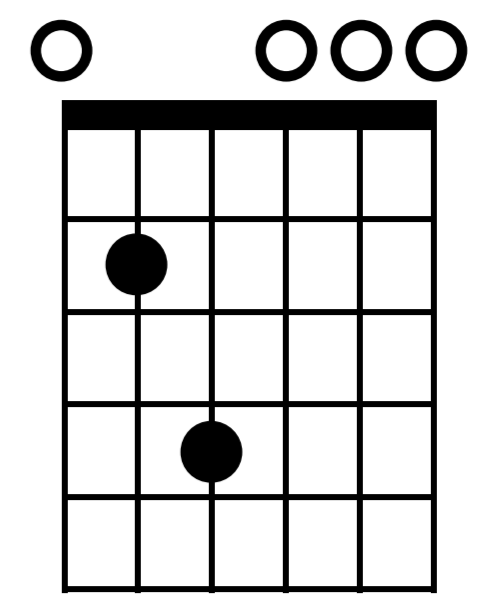
B7



Em



Em add9



Musical notation in treble clef with a key signature of one sharp (F#). The staff shows measures 16 through 20. Measure 16 starts with a treble clef and a sharp sign. Measure 18 has a sharp sign on the first line. Measure 20 ends with a double bar line and a repeat sign, followed by a '3x' instruction.

joy. Oh ti- dings of com- fort and joy. God

TAB

5 3 3 5 4

3 5

7 8 10 12 13

8 10 8 7

7 10 8 7

0 0 0 2 2 2 3

0 0 0 4 2 0