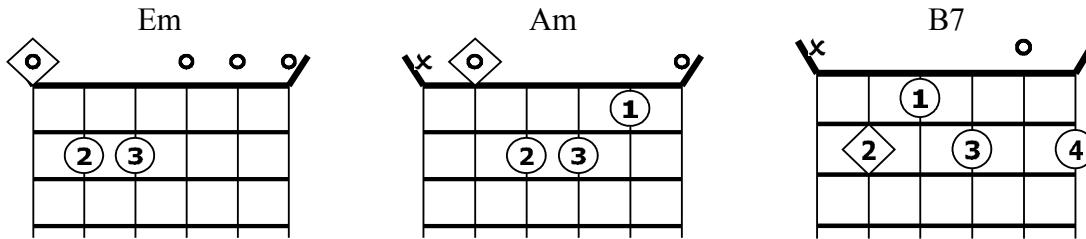
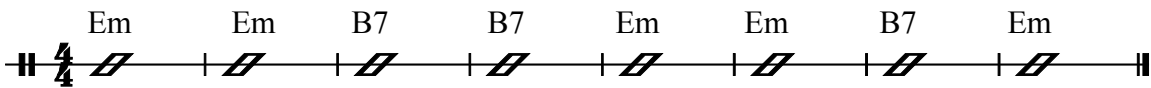


KEY OF Em

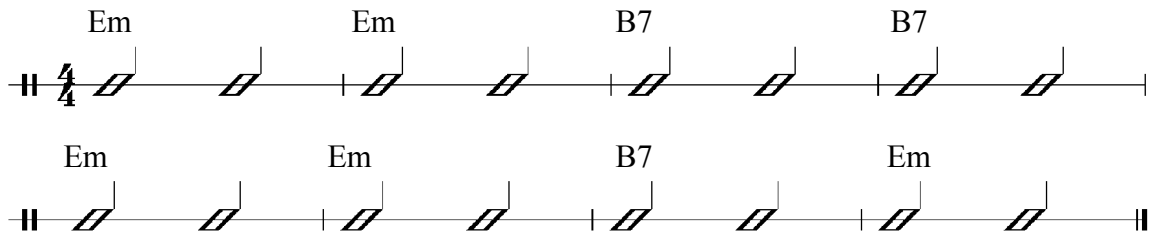


EXERCISES 1 TO 5. CHANGING FROM CHORD TO CHORD

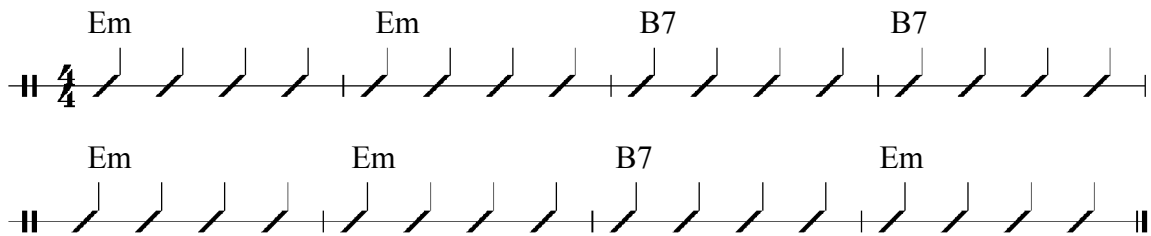
Ex.1 Whole notes. Use down pick strokes only.



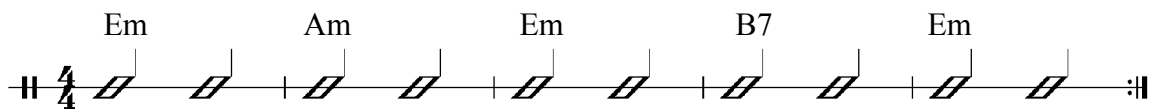
Ex.2 Half notes. Use down pick strokes only.



Ex.3 Quarter notes. Use down pick strokes only.



Ex.4 Changing chords quickly and in time. Use down pick strokes only.



Ex.5 Changing chords faster. Use down pick strokes only.

