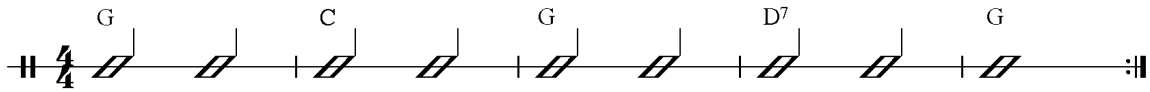
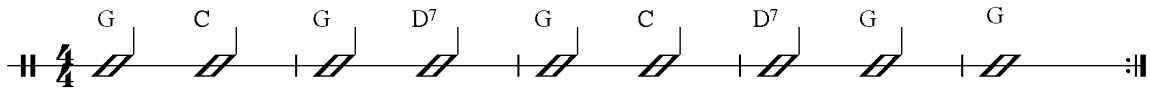


Ex.4 Changing chords quickly and in time. Use down pick strokes only.

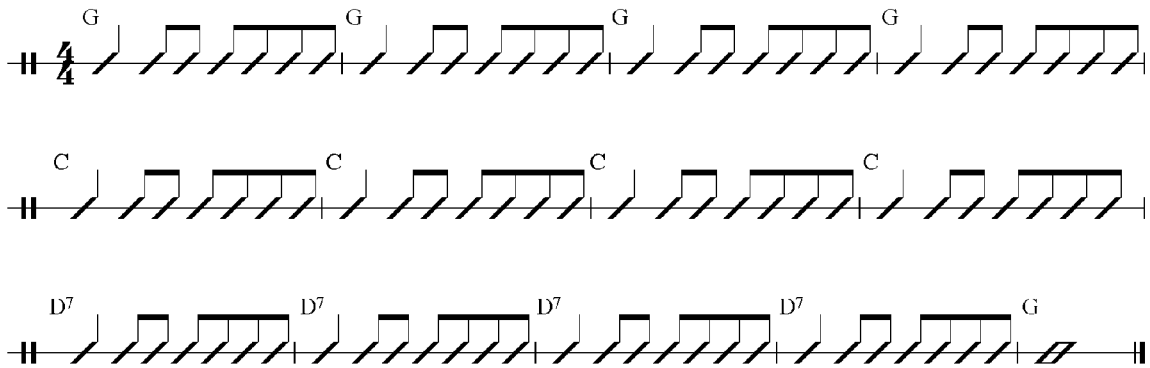


Ex.5 Changing chords faster. Use down pick strokes only.



EXERCISES 6 TO 10. ESSENTIAL RHYTHM PATTERNS

Ex.6 This rhythm pattern can be used for a million songs in almost any genre. When playing eighth notes, use alternating down and up pick strokes. Always use a down stroke on the downbeat. The downbeat is on the numbers 1, 2, 3, 4. Always use an up pick stroke on the upbeat. The upbeat is on the 'and' between the numbers.



Ex.7 Twelve bar blues. This is a form that is used in countless songs. There are variations of it. When the first four bars remain on G, as they do below, it is called the *twelve bar blues with the slow change*.

